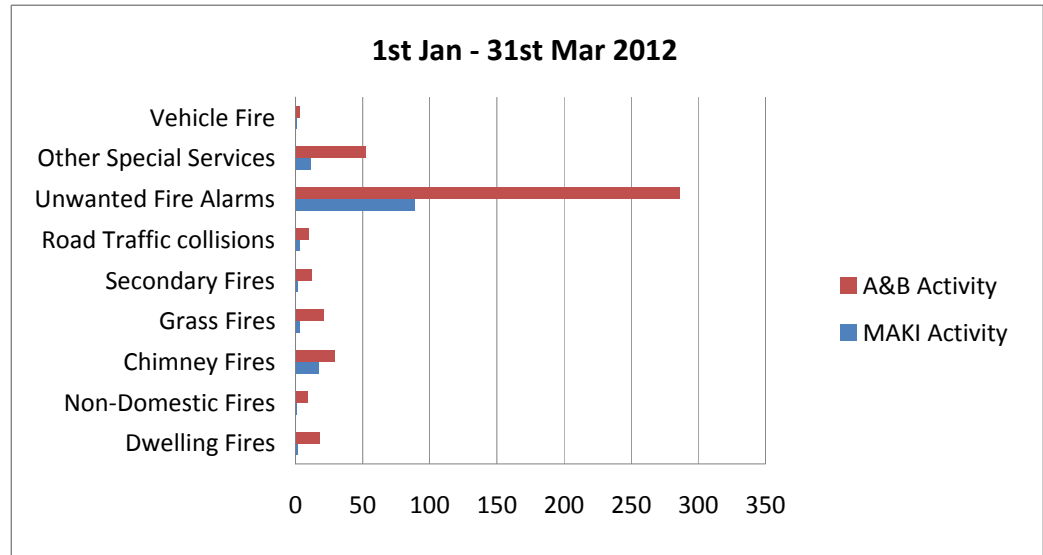
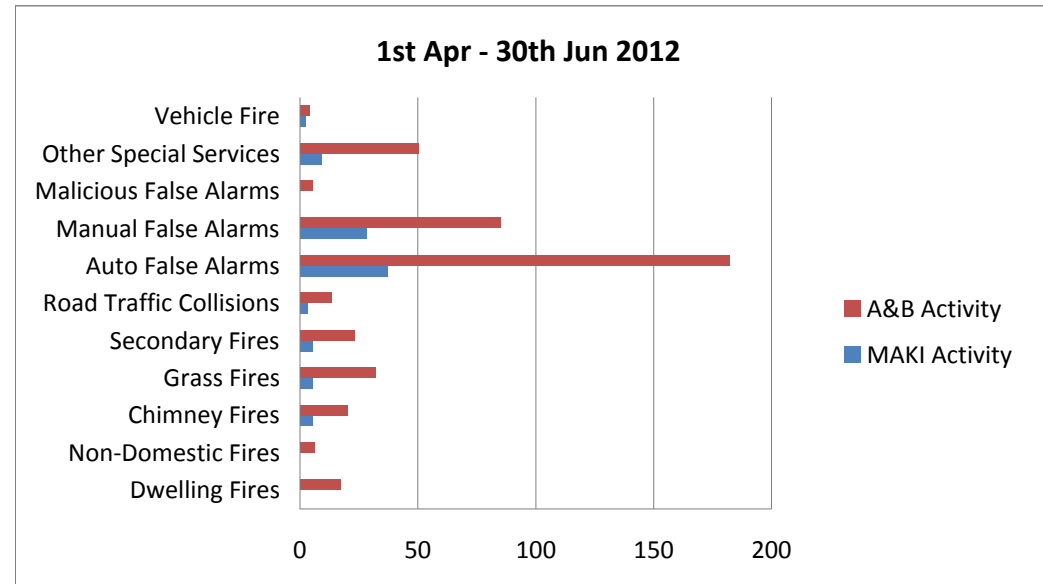


MAKI Community Safety Forum Strathclyde Fire and Rescue Incident Report 2012

1st Jan - 31st Mar 2012			
Incident	MAKI Activity	A&B Activity	MAKI activity against A&B
Dwelling Fires	2	18	11%
Non-Domestic Fires	1	9	11%
Chimney Fires	17	29	59%
Grass Fires	3	21	14%
Secondary Fires	2	12	17%
Road Traffic collisions	3	10	30%
Unwanted Fire Alarms	89	286	31%
Other Special Services	11	52	21%
Vehicle Fire	1	3	33%
Total for B&C	129	440	11%



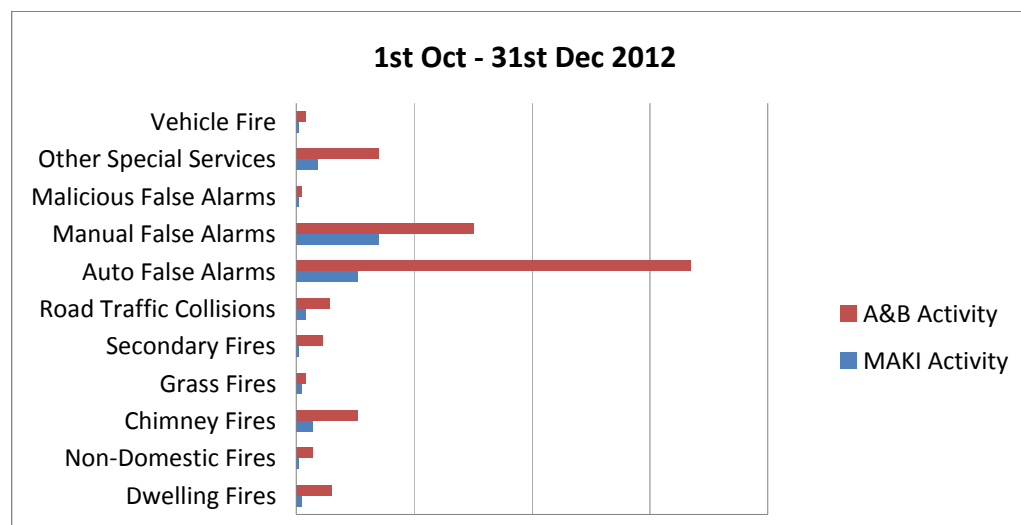
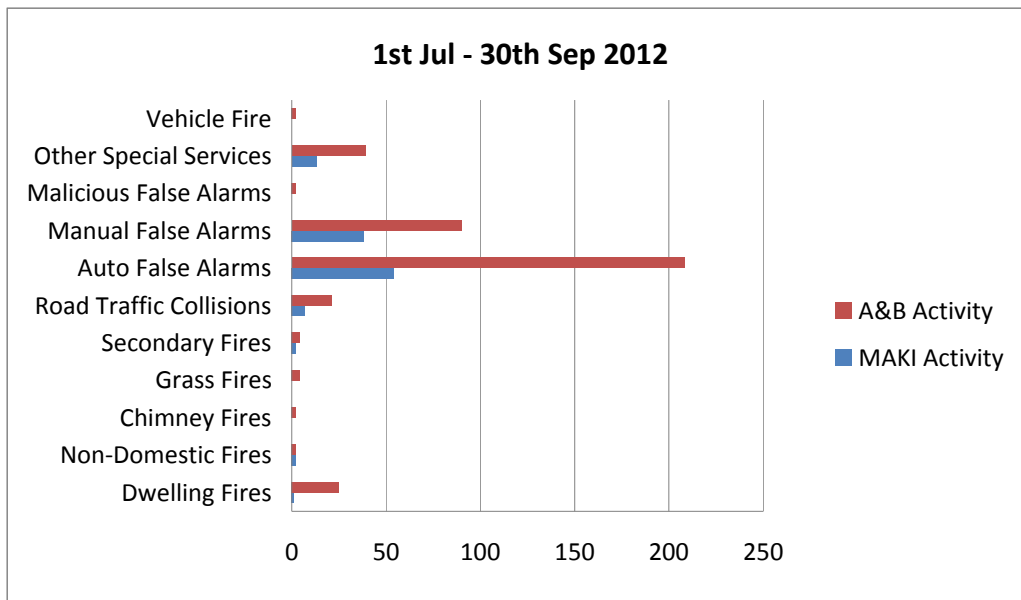
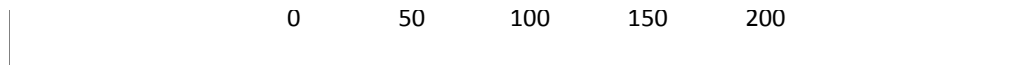
1st Apr - 30th Jun 2012			
Incident	MAKI Activity	A&B Activity	MAKI activity against A&B
Dwelling Fires	0	17	0%
Non-Domestic Fires	0	6	0%
Chimney Fires	5	20	25%
Grass Fires	5	32	16%
Secondary Fires	5	23	22%
Road Traffic Collisions	3	13	23%
Auto False Alarms	37	182	20%
Manual False Alarms	28	85	33%
Malicious False Alarms	0	5	0%
Other Special Services	9	50	18%



Vehicle Fire	2	4	50%
Total for B&C	94	437	22%

1st Jul - 30th Sep 2012			
Incident	MAKI Activity	A&B Activity	MAKI activity against A&B
Dwelling Fires	1	25	4%
Non-Domestic Fires	2	2	100%
Chimney Fires	0	2	0%
Grass Fires	0	4	0%
Secondary Fires	2	4	50%
Road Traffic Collisions	7	21	33%
Auto False Alarms	54	208	26%
Manual False Alarms	38	90	42%
Malicious False Alarms	0	2	0%
Other Special Services	13	39	33%
Vehicle Fire	0	2	0%
Total for B&C	117	399	29%

1st Oct - 31st Dec 2012			
Incident	MAKI Activity	A&B Activity	MAKI activity against A&B
Dwelling Fires	2	15	13%
Non-Domestic Fires	1	7	14%
Chimney Fires	7	26	27%
Grass Fires	2	4	50%
Secondary Fires	1	11	9%
Road Traffic Collisions	4	14	29%
Auto False Alarms	26	167	16%
Manual False Alarms	35	75	47%
Malicious False Alarms	1	2	50%



Other Special Services	9	35	26%
Vehicle Fire	1	4	25%
Total for B&C	89	360	25%

